

## Quick Start Guide

# D20-F2 Series



### **D20-F2**

FHD Dual Dashcam / Wi-Fi & Smart ADAS



### **D20-F2E**

FHD Dual Dashcam / Wi-Fi

# VUEROiD

The product is a dashboard camera.  
Make sure to understand the contents of the manual to use the product correctly.

## Precautions Before Using the Product

### Warning

Do not expose this product to rain, moisture or water under any circumstances, doing so may result in the risk of electric shock or fire.

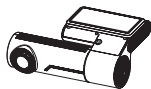
### Caution

To reduce the risk of electric shock, do not perform any servicing other than that contained in this instruction unless you are qualified to do so. Please make sure to have the unit serviced by a qualified service technician if you are facing with some cases as follows;

1. The unit has been exposed to rain or water.
2. The unit does not seem to operate normally.
3. The unit shows a marked change in performance.

VUEROID does not warranty any defects that can be caused by owner's fault  
VUEROID is not responsible for any damaged that occur while driving.

## Package Contents



Dashcam



Rear View Camera



Hardwiring Cable  
(3m/9.8ft)



Rear View Camera Cable  
(6m/19.6ft)



Wind Shield Tape



Quick Manual

### Option



Micro SD Card

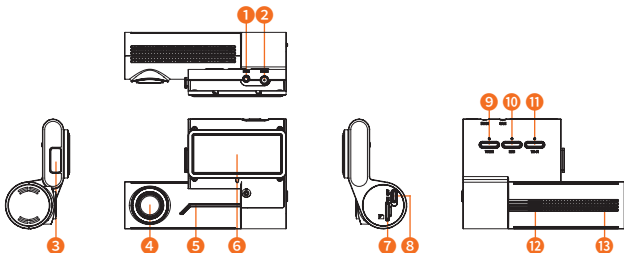


SD Card Adaptor & Case



12V Power Cable

## Product Overview



Mark	Description
1	CAM Input Port Used to connect the rear camera
2	DC-IN Power Port Used to connect the power cable
3	Wi-Fi Dongle Wi-Fi dongle for Wi-Fi network connection
4	Camera Lens Front camera for video recording
5	Front LED Indicate parking status and provides security effect
6	Mount Installation Mount
7	Memory Card Slot Insert a memory card
8	Power Switch Power ON/OFF switch
9	Voice Button Press more than 3 seconds : Voice guidance ON/OFF Press less than 3 seconds : Voice recording ON/OFF
10	Manual Recording Button Press to start manual recording
11	Wi-Fi Button Press to connect the product to smartphone via Wi-Fi network
12	Speaker Speaker for voice guidance
13	MIC Microphone for voice recording

## Key Features



FHD DUAL



SONY Starvis  
Image Sensor



ADAS



Safety  
Camera Alert



Night Vision



Wi-Fi



Prevent Discharge



Time Lapse



Format Free



Built-in GPS

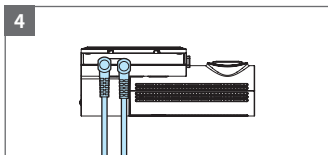
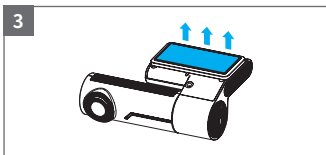
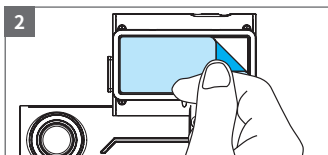
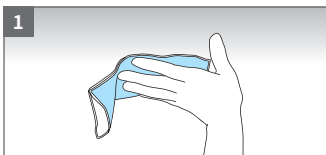
(\*ADAS, Safety Camera Alert, and Built-in GPS are not included with D20-F2E)

## Device Installation

### Caution

- Make sure to install the device in a safe area and that the engine is OFF.
- Please check if the Micro SD card is inserted correctly before connecting to power.
- Make sure the installation area is clean.
- Unplug the DC power if you are not using the device for a long period of time.
- Do not drop the product as it may not function properly.
- During extreme high temperatures or hot weathers, parking indoors is suggested.

### 1. Main Device Installation



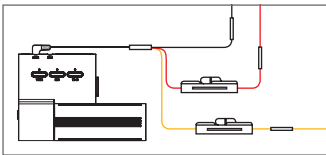
- (1) Select and clean the area where the product will be installed.
- (2) Remove the Wind Shield tape film.
- (3) Attach the device.
- (4) Connect the rear view camera and connect the power cable.

**⚠ To avoid interrupted reception with other devices such as a navigation, make sure the wiring is not overlapped with enough space in between.**

## Caution When Inserting Micro SD Card

- Do not apply excessive force on the Micro SD card or insert in the wrong direction. Any actions which may cause an SD card error, will be the responsibility of the user.
- Please test the Micro SD card for errors frequently and because it is a consumable item, it should be replaced periodically.
- Make sure the device is turned off when you pull out the SD card.
- Any issues arisen by using a different Micro SD card besides VUEROID's are the responsibilities of the user.
- Store important recordings into other devices (ex, PC).

## 2. Connecting Hardwiring Cable



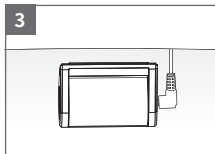
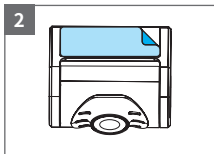
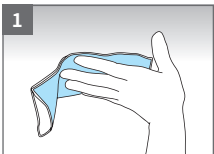
**BLACK** : GND

**YELLOW** : BAT (B+)

**RED** : ACC

**⚠ Please visit a professional installer to connect hardwire cable.**

## 3. Rear View Camera Installation



- (1) Select and clean the area where the product will be installed.
- (2) Remove the Wind Shield tape film.
- (3) Connect the rear view camera and connect the power cable.

**⚠ Before installation, make sure the engine is turned off.**

**⚠ Make sure the installation area is cleaned.**

**⚠ Make sure the installation area doesn't interfere with the window's infrared rays.**

## Using Wi-Fi Application

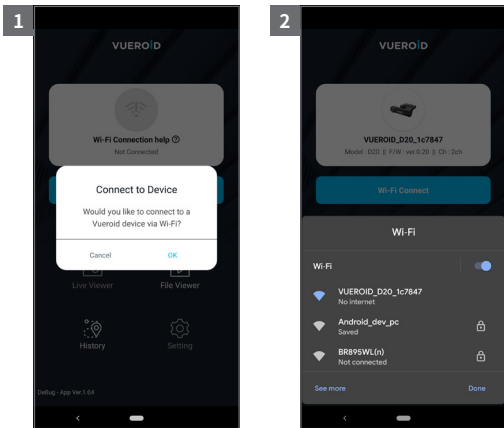
### 1. Wi-Fi Application Download and Installation

Search “VUEROID Dashcam” on the App Store (iPhone), Play Store (Android) then install.

### 2. Wi-Fi Application Registration

Turn on the “Wi-Fi” button on the dashcam.

Then it shows a SSID (VUEROID\_D20-F2\_XXXXXX) on the list of Wi-Fi network.



(1) Tap on “OK” once the pop-up screen is shown and it says “Connect to device”.

(2) You’ll be greeted by a SSID in the form of VUEROID\_D20-F2\_XXXXXX in a given Wi-Fi network listing.

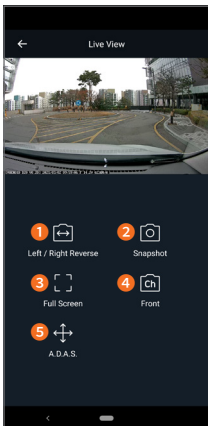
Tap on that SSID and key in a default PW(12345678).

### 3. Wi-Fi Application Start-up Screen



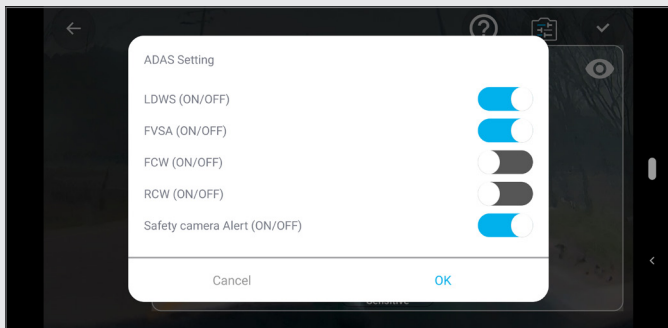
1 Wi-Fi Status	Display Wi-Fi status and the name of the connected device.
2 Wi-Fi Connect	Enable or Disable Wi-Fi connection.
3 Live Viewer	View the front / rear live stream.
4 File Viewer	Find the recording files in different folders.
5 History	Find the trip data and travel route by dates. (*not included in D20-F2E)
6 Setting	Allows user to get unit's settings switched.

### 4. Live View Mode



1 Left / Right Reverse	Switch to Left / Right viewing image.
2 Snapshot	Capture the display image.
3 Full Screen	Display the full screen.
4 CH (Front / Rear)	Switch to Front / Rear camera image.
5 ADAS	Initialize the ADAS calibration setting. Enable or disable following functions 1) LDWS 2) FVSA 3) FCW 4) RCW 5) Safety camera Alert (*not included in D20-F2E)

## ADAS Setting (\*not included in D20-F2E)



### ADAS

You can Enable or Disable a lane departure warning system (LDWS), a Front Vehicle Start Alarm (FVSA), a Forward Collision Warning System (FCWS), a Rear Collision Warning (RCW), and set their options.

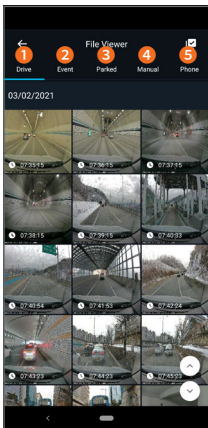
### Safety Camera Alert

When the vehicle approaches or passes the speed limit zone, the safety camera alert system will Collect GPS signals and safety camera data. Refer to the following instructions to enable or disable this feature.

Download will be available on the VUEROID website (<http://www.vueroid.com/support/download>).



## 5. View the Recordings (File Viewer)



The recording files in the D20 unit can be viewed through the File Viewer. Each folder support the thumbnail view with front / rear options.

1 Drive	Drive recordings videos are saved. Recorded videos are saved in 1 minute segment with an auto-looping mechanism.
2 Event	Event-triggered videos are saved in 30 seconds, from 10 seconds before detection to 20 seconds after detection.
3 Parked	Park recordings videos are saved. Max 30 seconds of recording files including motion / impact event recordings are saved.
4 Manual	Manual recordings videos are saved in 30 seconds, from 10 seconds before manual recording button is pushed to 20 seconds after.
5 Phone	Recordings videos saved in the smart phone are saved.

## 6. Travel Log (\*not included in D20-F2E)

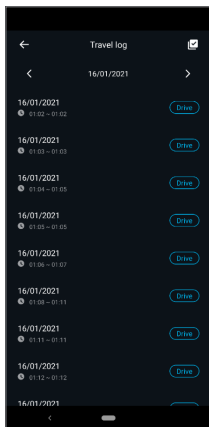
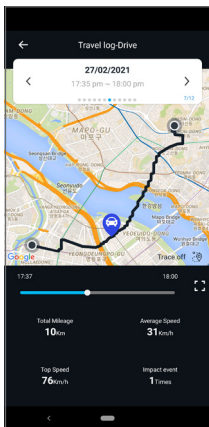


It logs every trip you take and reports like mileage and trip time, as well as any impact events that might have occurred on the road.

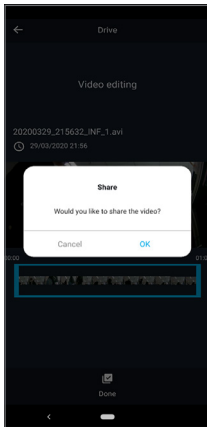
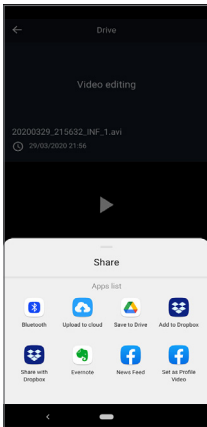
## 7. GPS Mapping within the App (\*not included in D20-F2E)

Your Itineraries can be safely stored in the History Menu so that you can access all your previous car rides.

Plus, Travel-log drive will help drivers or fleet managers to find a vehicle's current Location using the VUEROID Mobile app. Captured by the VUEROID Built-in antenna, the vehicle's location, speed, and direction of travel is shown in the mobile app on a Google maps display.

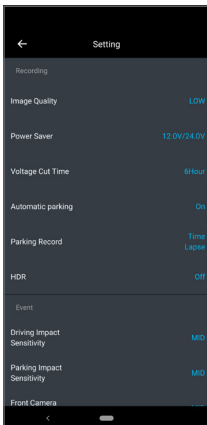


## 8. Review & Edit Footage on the App



With this app you can immediately access your footage directly on your smartphone. Make quick edits to trim the excess and keep only the best parts.

## 9. Configuration (Setting)



It gives you a complete control over your dash cam's settings.

Each given categories can be seen as follows

Recording	Settings for image quality, Power saver, parking mode time.
Event	Settings for impact and motion events sensitivity while parking.
Sound	Settings for voice recording options and speaker volume.
Time	Settings for standard time and the current time.
Memory	Settings for memory allocation / Micro SD card Format.
System	Settings for system / Reboot.

## Using Desktop Software

### 1. Download PC Viewer

Open the Internet browser then download the PC Viewer on the following link in below.

<http://www.vueroid.com/support/download>

### 2. PC Viewer Compatibility

The PC viewer is compatible for both Windows and Mac OS computers.



### 3. Start PC Viewer

Open the installed VUEROID D20 Viewer on the desktop.

Before opening the viewer, make sure the Micro SD card is inserted.



## Product Spec

### Product Specifications

Item		Description
Camera	CIS	Front / Rear : SONY Starvis 2M (IMX307)
	Resolution	Front / Rear : 1920 x 1080 @ 30fps
	View Angle	Front / Rear : (D)146° x (H)116° x (V)90°
Memory Card	Micro SD Card (16GB / 32GB / 64GB / 128GB / 256GB)	
GPS	Built-in Antenna (*not included in D20-F2E)	
LED Indicators	Front : Security & Status LED / Rear : Security LED	
G-Sensor	3-Axis Acceleration Sensor, +2g / -2g	
Speaker	Built-in Speaker (Voice Guide)	
Microphone	Built-in Microphone	
Video Codec	H.264 High Profile	
Recording Mode	Normal / Event / Manual / Parking (Motion & Time lapse)	
Dimensions	Front : 107.8mm x 42.6mm x 75.4mm Rear : 52mm x 29mm x 42mm	
Weight	Front : 107.5g / Rear : 28g	
Power Input	DC 12V ~ 24V	
Power Consumption	Max. 5.4W at 12V	
Operating Temp.	-20°C ~ 70°C (-4°F ~ 158°F)	
High Temp. Cut-off	Approximate 70°C (158°F) / Battery Discharge Prevention	

### General Specifications

Item	Description
Certifications	FCC, CE, ROHS, RCM
Software	IOS & Android compatible mobile app Window & Mac compatible PC viewer

## Frequently Asked Questions

**Q1. Is it possible to use the product regardless of types of cars such as a passenger car or a commercial vehicle?**

The product for both 12V and 24V can be used regardless of types of cars.

**Q2. What is a low voltage prevention function (vehicle battery discharge)?**

The product is embedded with a low voltage prevention function. It is available to set voltage values through environment setting. If the voltage of a vehicle drops below the set value, the power of the product is turned off automatically.

**Q3. No impact has occurred but a video file is saved in an event folder.**

The product detects impacts through a G sensor of the dashcam. An impact is saved in an event folder when the product detects shaking of a vehicle going over a speed bump or in other situations. It is possible to adjust the sensitivity of the G sensor (an impact sensor) through environment setting.

**Q4. I cannot not turn on the power.**

Check if the power cord is connected properly. If it is connected properly, check the status of the battery. The lifespan of a fuse may be expired. If a problem is not solved even after the fuse is replaced, contact the customer service. (cs@nc-and.com)

### Warrenty Information

All dashcams sold from VUEROID include a 1 year manufacturer warranty (6 months for SD card).

The warranty does not apply to the following

- 1) Cosmetic damage, such as scratches, and dents.
- 2) Damage caused by accident, abuse or natural disaster.
- 3) Damage caused by service performed by anyone who is not an authorized service provider of VUEROID.
- 4) Damage to a product by not using supplied power or accessories in the package.

### Firmware / Safety Camera DB update

Full Manual / Firmware / Safety Camera DB, Download is available on the VUEROID website (<http://www.vueroid.com/support/download>).

